

State of Wyoming Corner Record

(In compliance with the *CORNER PERPETUATION AND FILING ACT*, Wyoming Statutes, 1977, Section 36-11-101, et, seq., and the Rules and Regulations of the Board of Registration for Professional Engineers and Professional Land Surveyors)

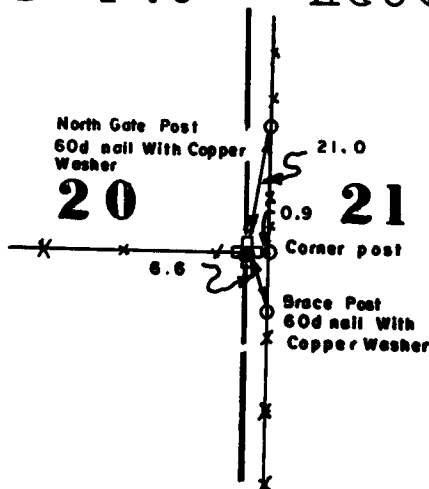
Reverse side of this form may be used if more space is needed.

Record of original survey and citation of source of historical information (if corner is lost or obliterated). Description of corner monumentation evidence found and/or monument and accessories established to perpetuate the location of this corner. Sketch of relative location of monument, accessories, and reference points with course and distance to adjacent corner(s) (if determined in this survey). Method and rationale for reestablishment of lost or obliterated corner.

GLO North between Sections 20 and 21 measure 40 chains and set red sandstone 18x10x8 with 1/4 on East side.

Set 2" iron pipe 36" long with an aluminum cap at intersection with fence to the West reputed to be the 1/4 corner of Section 20 and Sec 21 by the long-time land owner. Measure 2631.03 feet found Sec. Cor 17, 16, 20 and 21 which bears N00°36'22"E and the 1/4 Sec 21 and Sec 22 bears S89°26'55"E, and the Sec. corner 20, 21, 28, & 29 bears S00°36'22" W a distance of 2663.25 feet.

T.15 N. R.60 W.

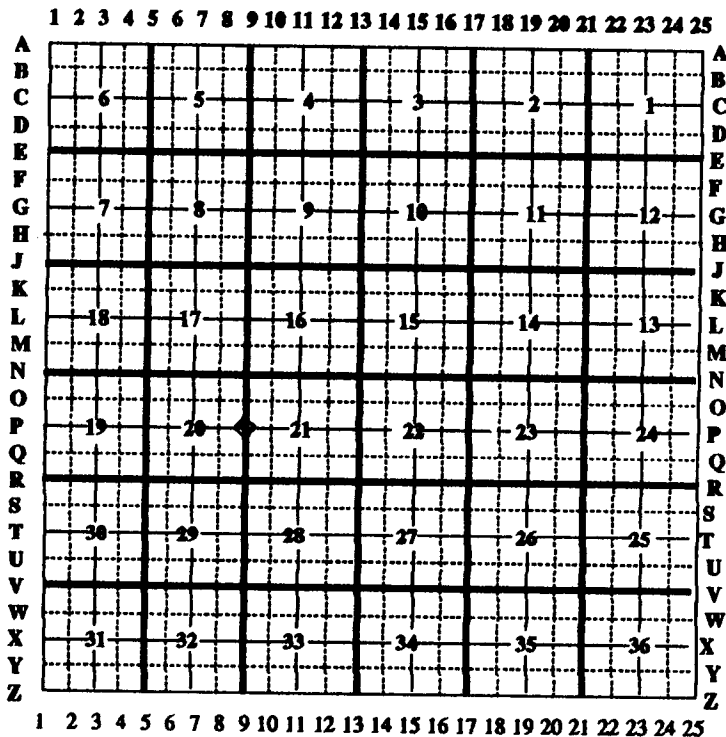


dp

174248
LARAMIE COUNTY CLERK
CHEYENNE, WY.
'95 DEC 20 PM 1 40

Date of Field Work: 7 June 1995 Office Reference: _____

CROSS INDEX DIAGRAM



Firm/Agency, Address

Terrestrial Surveying & Mapping

P. O. Box 82

Cheyenne, WY 82003

Telephone Number: 634-9360

This corner record was prepared by me or under my direction and supervision.

SEAL & SIGNATURE

